

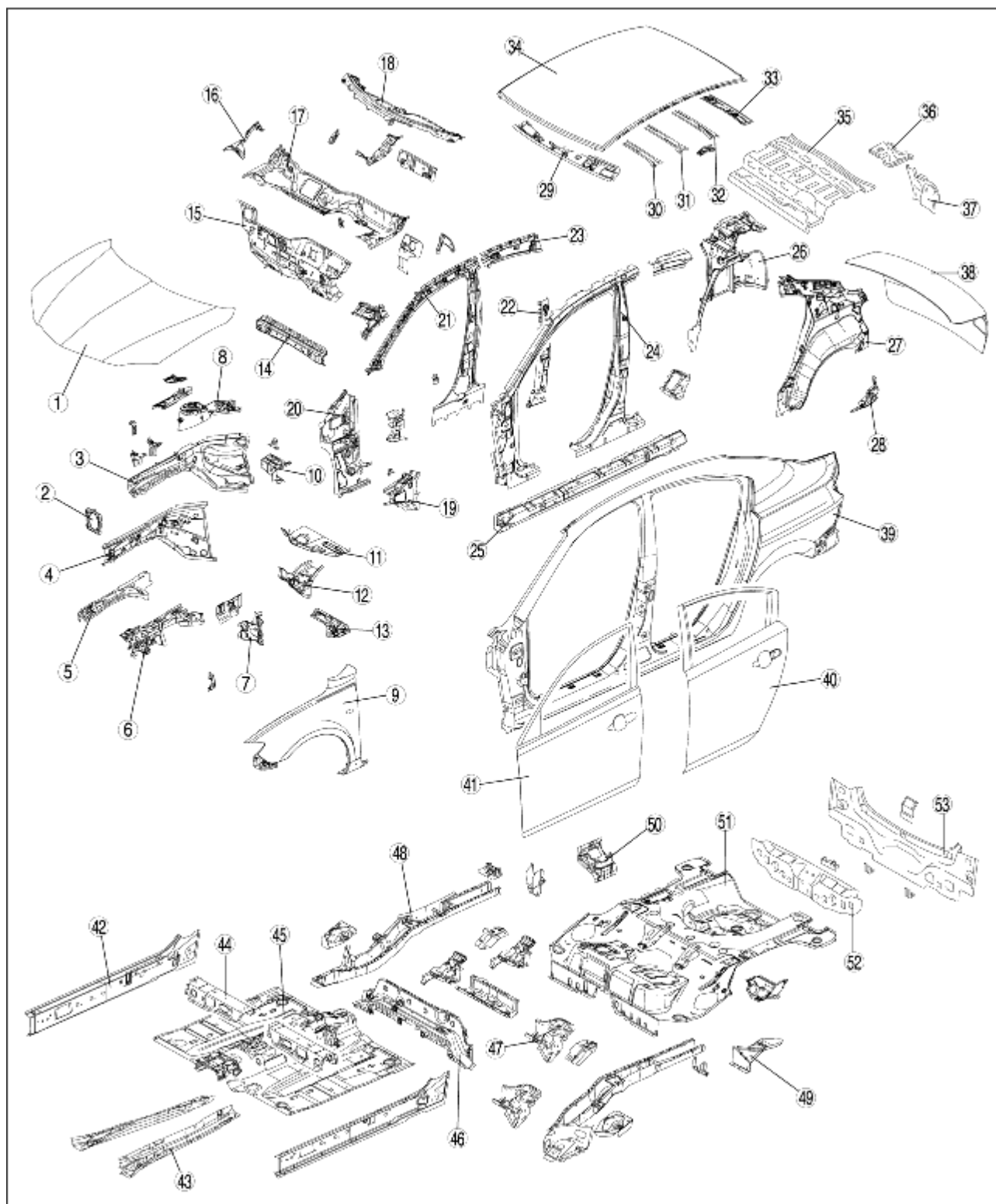
# BODY COMPONENTS CONSTRUCTION

---

B3E098007000B01

**4SD**

**L.H.D.models**



B3U0990B041

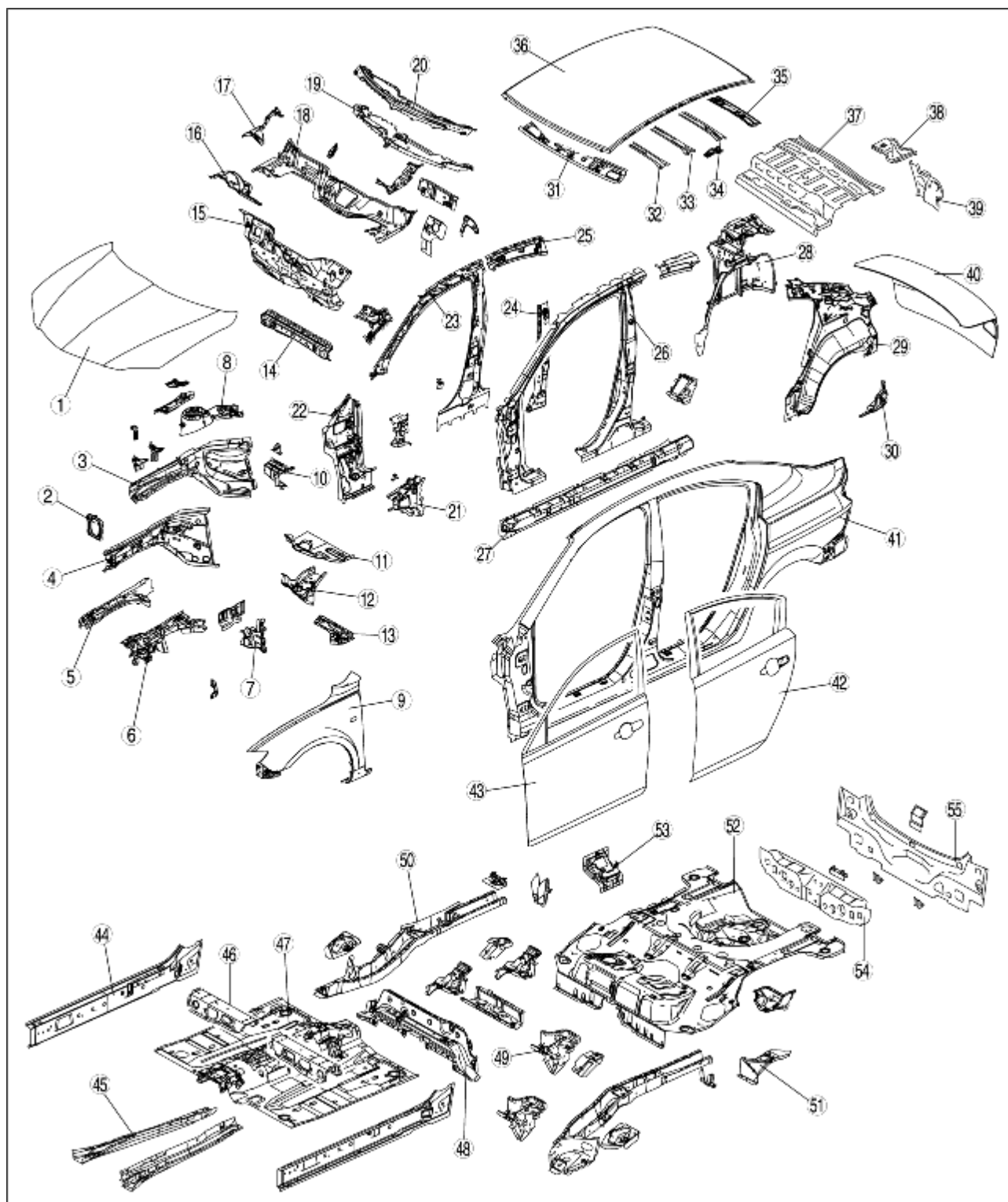
x:Applied  
-:Not applied

No.	Part Name	High- tension steel	Rust proof steel	Thickness	
				(mm)	{in}
1	Bonnet	-	x	0.70	{0.028}
2	Front bumper bracket	x	x	2.90	{0.114}

3	Front side frame (inner)		x	x	1.60	{0.063}
4	Front side frame (outer)		x	x	1.60	{0.063}
5	Apron reinforcement (lower)		-	x	0.70	{0.028}
6	Apron reinforcement (upper)		-	x	1.00	{0.039}
7	Shroud side panel		x	x	1.00	{0.039}
8	Suspension housing		-	x	2.60	{0.102}
9	Front fender panel		x	x	0.65	{0.026}
10	Side member deck		-	x	1.80	{0.071}
11	Front frame rear reinforcement		x	x	0.80	{0.031}
12	Front frame (rear)		x	x	1.80	{0.071}
13	Torque box		-	x	1.60	{0.063}
14	Dash lower member		x	x	1.40	{0.055}
15	Dash lower panel			x	0.80	{0.031}
16	Wiper bracket		-	x	1.40	{0.055}
17	Dash upper panel		-	x	0.85	{0.033}
18	Cowl panel		-	x	0.80	{0.031}
19	Cowl side reinforcement		-	x	0.70	{0.028}
20	Hinge pillar (inner)		x	x	1.60	{0.063}
21	Front pillar (inner)	LH	x	-	1.40	{0.055}
		RH	x	-	1.60	{0.063}
	Center pillar (inner)	Upper	LH	x	1.60	{0.063}
			RH	x	1.80	{0.071}
		Center	x	-	1.20	{0.047}
		Lower	x	-	1.00	{0.039}
22	Center pillar reinforcement (inner)		x	-	1.80	{0.071}
23	Roof rail (inner, rear)		x	-	1.00	{0.039}
24	Front pillar reinforcement	Upper	x	-	1.80	{0.071}
		Lower	x	-	1.80	{0.071}
	Center pillar reinforcement	Upper	x	-	1.40	{0.055}
		Lower	x	-	1.20	{0.047}
25	Side sill reinforcement		x	-	1.40	{0.055}
26	Wheel house (inner)		-	x	0.70	{0.028}
27	Rear pillar (inner)		-	x	0.65	{0.026}
28	Rear fender lower panel		-	x	0.70	{0.028}
29	Front header		-	-	0.65	{0.026}
30	Roof reinforcement (front)		-	-	0.55	{0.021}
31	Roof reinforcement center		-	-	1.00	{0.039}
32	Roof reinforcement (rear)		-	-	1.00	{0.039}
33	Rear header		-	-	0.70	{0.028}
34	Roof panel		-	-	0.70	{0.028}
35	Package tray		-	-	0.60	{0.024}
36	Rear fender rain rail		-	x	0.70	{0.028}
37	Corner plate		-	x	0.70	{0.028}
38	Trunk lid panel		x	x	0.70	{0.028}
39	Side panel (outer)		-	x	0.70	{0.028}
40	Rear door		-	x	0.65	{0.026}

41	Front door	-	x	0.70	{0.028}	
42	Side sill (inner)	x	x	1.40	{0.055}	
43	Front B frame	x	x	0.90	{0.035}	
44	Crossmember No.2	x	-	1.20	{0.047}	
45	Front floor pan	-	x	0.70	{0.028}	
46	Crossmember No.3	x	x	1.60	{0.063}	
47	Crossmember No.4 gusset	-	x	1.40	{0.055}	
48	Rear side frame	Front	x	x	2.00	{0.079}
		Center	x	x	2.60	{0.102}
		Rear	x	x	1.80	{0.071}
49	Crossmember No.3 (front)	-	x	1.60	{0.063}	
50	Suspension housing	-	x	0.75	{0.030}	
51	Rear floor pan	-	x	2.00	{0.079}	
52	Rear end member	-	-	0.60	{0.024}	
53	Rear end panel	-	x	0.60	{0.024}	

**R.H.D.models**



B3U0980B042

x:Applied  
-:Not applied

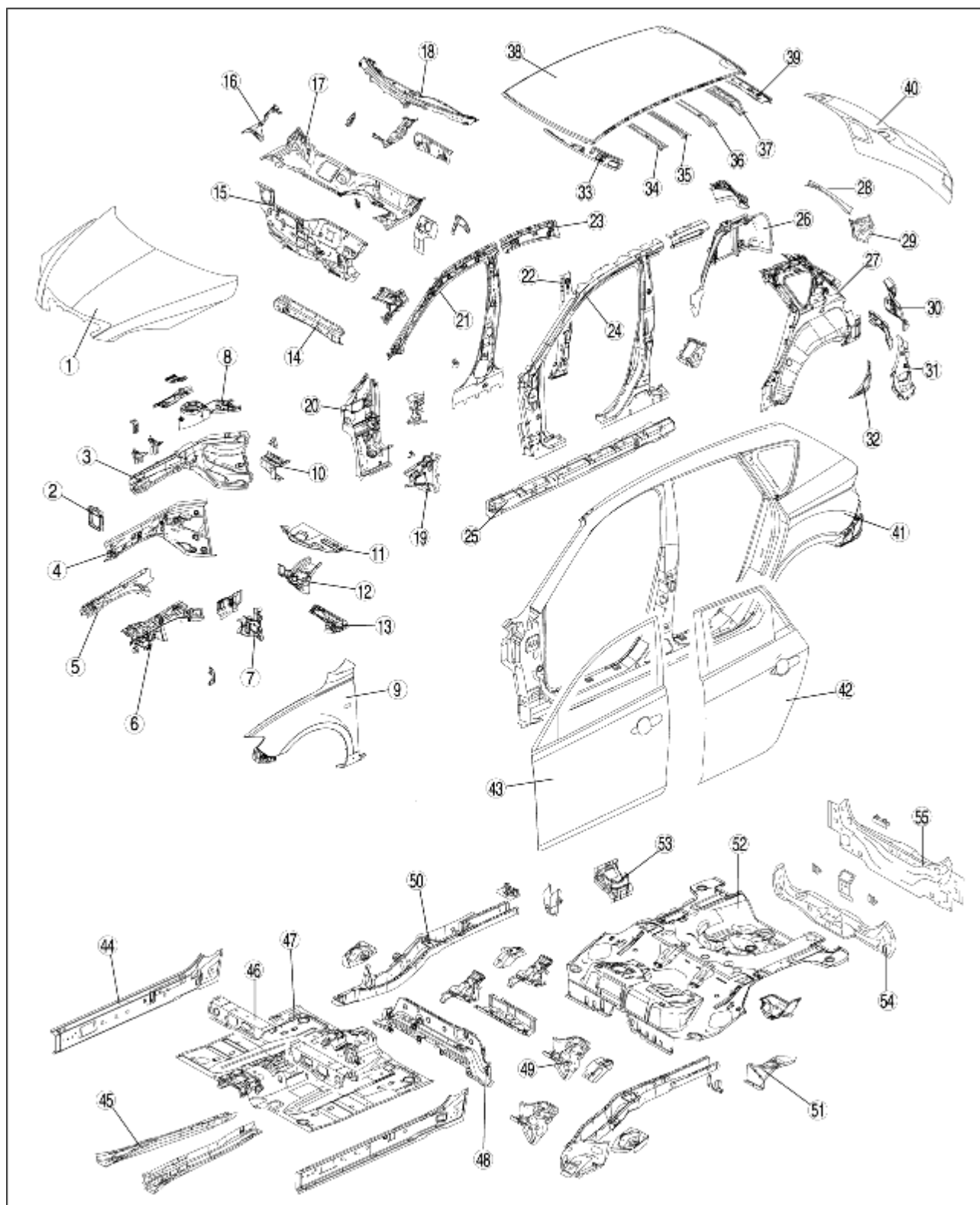
No.	Part Name	High- tension steel	Rust proof steel	Thickness	
				(mm)	{in}
1	Bonnet	-	x	0.70	{0.028}
2	Front bumper bracket	x	x	2.90	{0.114}
3	Front side frame (inner)	x	x	1.60	{0.063}

4	Front side frame (outer)		x	x	1.60	{0.063}
5	Apron reinforcement (lower)		-	x	0.70	{0.028}
6	Apron reinforcement (upper)		-	x	1.00	{0.039}
7	Shroud side panel		x	x	1.00	{0.039}
8	Suspension housing		-	x	2.60	{0.102}
9	Front fender panel		x	x	0.65	{0.026}
10	Side member deck		-	x	1.80	{0.071}
11	Front frame rear reinforcement		x	x	0.80	{0.031}
12	Front frame (rear)		x	x	1.80	{0.071}
13	Torque box		-	x	1.60	{0.063}
14	Dash lower member		x	x	1.40	{0.055}
15	Dash lower panel			x	0.80	{0.031}
16	Cowl upper plate		-	x	0.80	{0.031}
17	Wiper bracket		-	x	1.40	{0.055}
18	Dash upper panel		-	x	0.85	{0.033}
19	Dash upper member		-	x	0.70	{0.028}
20	Cowl panel		-	x	0.80	{0.031}
21	Cowl side reinforcement		-	x	0.70	{0.028}
22	Hinge pillar (inner)		x	x	1.60	{0.063}
23	Front pillar (inner)	LH	x	-	1.40	{0.055}
		RH	x	-	1.60	{0.063}
	Center pillar (inner)	Upper	LH	x	1.60	{0.063}
			RH	x	1.80	{0.071}
		Center	x	-	1.20	{0.047}
		Lower	x	-	1.00	{0.039}
24	Center pillar reinforcement (inner)		x	-	1.80	{0.071}
25	Roof rail (inner, rear)		x	-	1.00	{0.039}
26	Front pillar reinforcement	Upper	x	-	1.80	{0.071}
		Lower	x	-	1.80	{0.071}
	Center pillar reinforcement	Upper	x	-	1.40	{0.055}
		Lower	x	-	1.20	{0.047}
27	Side sill reinforcement		x	-	1.40	{0.055}
28	Wheel house (inner)		-	x	0.70	{0.028}
29	Rear pillar (inner)		-	x	0.65	{0.026}
30	Rear fender lower panel		-	x	0.70	{0.028}
31	Front header		-	-	0.65	{0.026}
32	Roof reinforcement (front)		-	-	0.55	{0.021}
33	Roof reinforcement center		-	-	1.00	{0.039}
34	Roof reinforcement (rear)		-	-	1.00	{0.039}
35	Rear header		-	-	0.70	{0.028}
36	Roof panel		-	-	0.70	{0.028}
37	Package tray		-	-	0.60	{0.024}
38	Rear fender rain rail		-	x	0.70	{0.028}
39	Corner plate		-	x	0.70	{0.028}
40	Trunk lid panel		x	x	0.70	{0.028}
41	Side panel (outer)		-	x	0.70	{0.028}

42	Rear door	-	x	0.65	{0.026}	
43	Front door	-	x	0.70	{0.028}	
44	Side sill (inner)	x	x	1.40	{0.055}	
45	Front B frame	x	x	0.90	{0.035}	
46	Crossmember No.2	x	-	1.20	{0.047}	
47	Front floor pan	-	x	0.70	{0.028}	
48	Crossmember No.3	x	x	1.60	{0.063}	
49	Crossmember No.4 gusset	-	x	1.40	{0.055}	
50	Rear side frame	Front	x	x	2.00	{0.079}
		Center	x	x	2.60	{0.102}
		Rear	x	x	1.80	{0.071}
51	Crossmember No.3 (front)	-	x	1.60	{0.063}	
52	Rear floor pan	-	x	0.75	{0.030}	
53	Suspension housing	-	x	2.00	{0.079}	
54	Rear end member	-	-	0.60	{0.024}	
55	Rear end panel	-	x	0.60	{0.024}	

## 5HB

### L.H.D.models



B3U0980B043

x:Applied  
 -:Not applied

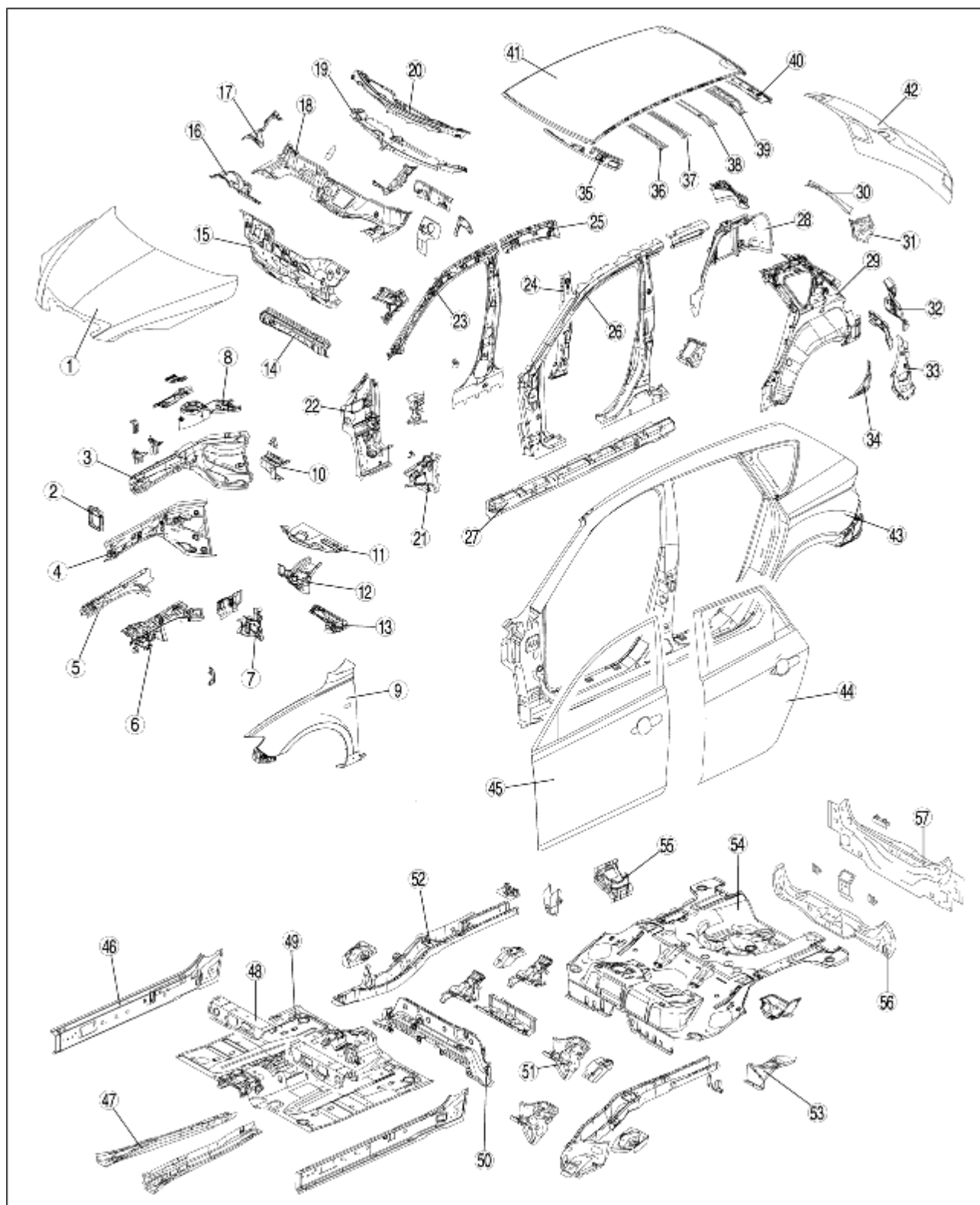
No.	Part Name	High- tension steel	Rust proof steel	Thickness	
				(mm)	{in}
1	Bonnet	x	x	0.70	{0.028}
2	Front bumper bracket	x	x	2.90	{0.114}



3	Front side frame (inner)		x	x	1.60	{0.063}
4	Front side frame (outer)		x	x	1.60	{0.063}
5	Apron reinforcement (lower)		-	x	0.70	{0.028}
6	Apron reinforcement (upper)		-	x	1.00	{0.039}
7	Shroud side panel		x	x	1.00	{0.039}
8	Suspension housing		-	x	2.60	{0.102}
9	Front fender panel		x	x	0.65	{0.026}
10	Side member deck		-	x	1.80	{0.071}
11	Front frame rear reinforcement		x	x	0.80	{0.031}
12	Front frame (rear)		x	x	1.80	{0.071}
13	Torque box		-	x	1.60	{0.063}
14	Dash lower member		x	x	1.40	{0.055}
15	Dash lower panel			x	0.80	{0.031}
16	Wiper bracket		-	x	1.40	{0.055}
17	Dash upper panel		-	x	0.85	{0.033}
18	Cowl panel		-	x	0.80	{0.031}
19	Cowl side reinforcement		-	x	0.70	{0.028}
20	Hinge pillar (inner)		x	x	1.60	{0.063}
21	Front pillar (inner)	LH	x	-	1.40	{0.055}
		RH	x	-	1.60	{0.063}
	Center pillar (inner)	Upper	LH	x	1.60	{0.063}
			RH	x	1.80	{0.071}
		Center	x	-	1.20	{0.047}
		Lower	x	-	1.00	{0.039}
22	Center pillar reinforcement (inner)		x	-	1.80	{0.071}
23	Roof rail (inner, rear)		x	-	1.00	{0.039}
24	Front pillar reinforcement	Upper	x	-	1.80	{0.071}
		Lower	x	-	1.80	{0.071}
	Center pillar reinforcement	Upper	x	-	1.40	{0.055}
		Lower	x	-	1.20	{0.047}
25	Side sill reinforcement		x	-	1.40	{0.055}
26	Wheel house (inner)		-	x	0.70	{0.028}
27	Rear pillar (inner)		-	x	0.65	{0.026}
28	Rear pillar (outer)		-	x	0.70	{0.028}
29	Corner plate		-	x	0.70	{0.028}
30	Rear side panel		-	-	0.70	{0.028}
31	Rear pillar reinforcement		-	-	0.70	{0.028}
32	Rear fender lower panel		-	x	0.70	{0.028}
33	Front header		-	-	0.65	{0.026}
34	Roof reinforcement (front)		-	-	0.55	{0.021}
35	Roof reinforcement center (front)		-	-	1.00	{0.039}
36	Roof reinforcement center (rear)		-	-	0.75	{0.030}
37	Roof reinforcement (rear)		-	-	0.55	{0.021}
38	Rear header		-	-	0.75	{0.030}
39	Roof panel		-	-	0.75	{0.030}
40	Liftgate panel		-	x	0.70	{0.028}

41	Side panel (outer)	-	x	0.70	{0.028}
42	Rear door	-	x	0.65	{0.026}
43	Front door	x	x	0.70	{0.028}
44	Side sill (inner)	x	x	1.40	{0.055}
45	Front B frame	x	x	0.90	{0.035}
46	Crossmember No.2	x	-	1.20	{0.047}
47	Front floor pan	-	x	0.70	{0.028}
48	Crossmember No.3	x	x	1.60	{0.063}
49	Crossmember No.4 gusset	-	x	1.40	{0.055}
50	Rear side frame	Front	x	2.00	{0.079}
		Center	x	2.60	{0.102}
		Rear	x	1.80	{0.071}
51	Crossmember No.3 (front)	-	x	1.60	{0.063}
52	Rear floor pan	-	x	0.75	{0.030}
53	Suspension housing	-	x	2.00	{0.079}
54	Rear end member	-	-	1.20	{0.047}
55	Rear end panel	-	x	0.60	{0.024}

**R.H.D.models**



B3U0980B044

x:Applied  
 -:Not applied

No.	Part Name	High- tension steel	Rust proof steel	Thickness	
				(mm)	{in}
1	Bonnet	x	x	0.70	{0.028}
2	Front bumper bracket	x	x	2.90	{0.114}

3	Front side frame (inner)		x	x	1.60	{0.063}
4	Front side frame (outer)		x	x	1.60	{0.063}
5	Apron reinforcement (lower)		-	x	0.70	{0.028}
6	Apron reinforcement (upper)		-	x	1.00	{0.039}
7	Shroud side panel		x	x	1.00	{0.039}
8	Suspension housing		-	x	2.60	{0.102}
9	Front fender panel		x	x	0.65	{0.026}
10	Side member deck		-	x	1.80	{0.071}
11	Front frame rear reinforcement		x	x	0.80	{0.031}
12	Front frame (rear)		x	x	1.80	{0.071}
13	Torque box		-	x	1.60	{0.063}
14	Dash lower member		x	x	1.40	{0.055}
15	Dash lower panel			x	0.80	{0.031}
16	Cowl upper plate		-	x	0.80	{0.031}
17	Wiper bracket		-	x	1.40	{0.055}
18	Dash upper panel		-	x	0.85	{0.033}
19	Dash upper member		-	x	0.70	{0.028}
20	Cowl panel		-	x	0.80	{0.031}
21	Cowl side reinforcement		-	x	0.70	{0.028}
22	Hinge pillar (inner)		x	x	1.60	{0.063}
23	Front pillar (inner)	LH	x	-	1.40	{0.055}
		RH	x	-	1.60	{0.063}
	Center pillar (inner)	Upper	LH	x	1.60	{0.063}
			RH	x	1.80	{0.071}
		Center		x	1.20	{0.047}
			Lower	x	1.00	{0.039}
24	Center pillar reinforcement (inner)		x	-	1.80	{0.071}
25	Roof rail (inner, rear)		x	-	1.00	{0.039}
26	Front pillar reinforcement	Upper	x	-	1.80	{0.071}
		Lower	x	-	1.80	{0.071}
	Center pillar reinforcement	Upper	x	-	1.40	{0.055}
		Lower	x	-	1.20	{0.047}
27	Side sill reinforcement		x	-	1.40	{0.055}
28	Wheel house (inner)		-	x	0.70	{0.028}
29	Rear pillar (inner)		-	x	0.65	{0.026}
30	Rear pillar (outer)		-	x	0.70	{0.028}
31	Corner plate		-	x	0.70	{0.028}
32	Rear side panel		-	-	0.70	{0.028}
33	Rear pillar reinforcement		-	-	0.70	{0.028}
34	Rear fender lower panel		-	x	0.70	{0.028}
35	Front header		-	-	0.65	{0.026}
36	Roof reinforcement (front)		-	-	0.55	{0.021}
37	Roof reinforcement center (front)		-	-	1.00	{0.039}
38	Roof reinforcement center (rear)		-	-	0.75	{0.030}
39	Roof reinforcement (rear)		-	-	0.55	{0.021}
40	Rear header		-	-	0.75	{0.030}

41	Roof panel	-	-	0.75	{0.030}	
42	Liftgate panel	-	x	0.70	{0.028}	
43	Side panel (outer)	-	x	0.70	{0.028}	
44	Rear door	-	x	0.65	{0.026}	
45	Front door	x	x	0.70	{0.028}	
46	Side sill (inner)	x	x	1.40	{0.055}	
47	Front B frame	x	x	0.90	{0.035}	
48	Crossmember No.2	x	-	1.20	{0.047}	
49	Front floor pan	-	x	0.70	{0.028}	
50	Crossmember No.3	x	x	1.60	{0.063}	
51	Crossmember No.4 gusset	-	x	1.40	{0.055}	
52	Rear side frame	Front	x	x	2.00	{0.079}
		Center	x	x	2.60	{0.102}
		Rear	x	x	1.80	{0.071}
53	Crossmember No.3 (front)	-	x	1.60	{0.063}	
54	Rear floor pan	-	x	0.75	{0.030}	
55	Suspension housing	-	x	2.00	{0.079}	
56	Rear end member	-	-	1.20	{0.047}	
57	Rear end panel	-	x	0.60	{0.024}	